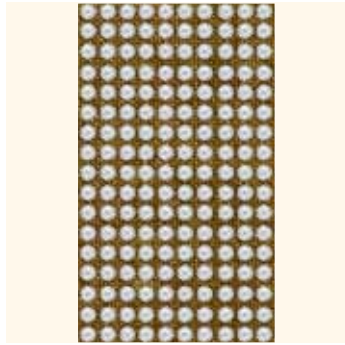


Article Explanation

<<<

62 000



R	001-022; 057
SS	SS 6 (2038)
M	10 M* 100%

62 000	R	SS	M	100%
Article number	This article is available in 1-22 and 57 rows.	Stone size	Minimum order quantity in meters (M)	Documentation size in %

Ordering Example & Product Variety Explanation

<<<

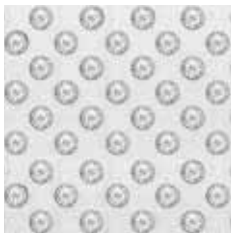
62 000	010	F080	001	NOHF
Article number	3-digit code for number of rows	Type and color of base material F Fabric S Synthetic 010 Transparent 012 Black 080 Antique Gold 081 Gold 082 Silver 083 Antique Silver	Color of crystals Please see the respective product matrix for all available code references.	Hotfix Technology HF With Hotfix glue NOHF Without Hotfix glue

* Please note: Bandings can be divided.

Available Base Material & Stone Configurations



Crystaltext Bandings are available in six different base materials. Please see the respective product matrix for all available options.



F082 Fabric Silver



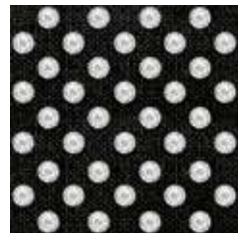
F083 Fabric Antique Silver



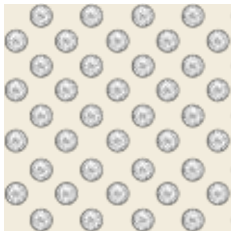
F081 Fabric Gold



F080 Fabric Antique Gold

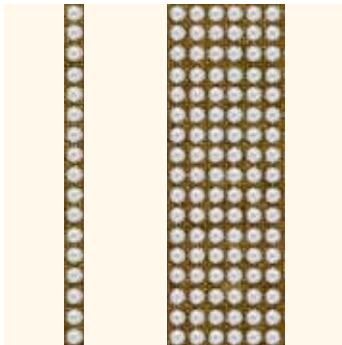


F012 Fabric Black



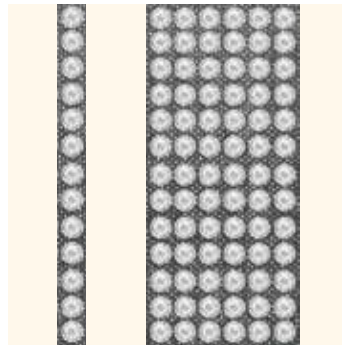
S010 Synthetic Transparent

62 000



R	001-022; 057	
SS	SS 6 (2038)	
M	10 M*	100%

62 010



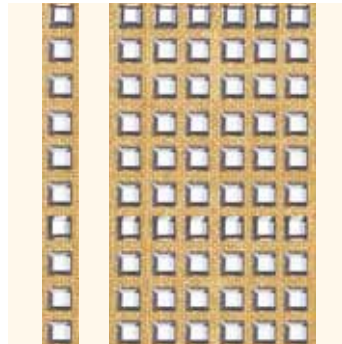
R	001-022; 044	
SS	SS 10 (2038)	
M	10 M*	100%

62 011



R	001-022; 044	
SS	SS 10 (2038)	
M	10 M*	100%

62 020



R	001-006; 033	
SS	3 mm (2400)	
M	10 M*	100%

* Please note: Bandings can be divided.

Synthetics Hotfix

Crystalltex

Bandings

	Stone Size			Base Material						
	SS 6	SS 10	3 mm	F012 Fabric Black	F080 Fabric Antique Gold	F081 Fabric Gold	F082 Fabric Silver	F083 Fabric Antique Silver	S010 Synthetic Transparent*	
62 000*										
62 010*										
62 011*										
62 020*										
Color										
Crystal F (001)	■	■	■	■	■	■	■	■	■	
Crystal AB F (001 AB)	■	■	■	■	■	■	■	■	■	
Crystal Dorado F (001 DOR)	■	■							■	
Crystal Golden Shadow F (001 GSHA)	■	■		■	■	■	■	■	■	
Crystal Silver Shade F (001 SSHA)	■	■		■	■	■	■	■	■	
Jet (280)	■	■	■	■	■	■	■	■	■	
Jet Hematite (280 HEM)	■	■	■	■	■	■	■	■	■	
Amethyst F (204)	■	■							■	
Aquamarine F (202)	■	■							■	
Black Diamond F (215)	■	■							■	
Emerald F (205)	■	■							■	
Fuchsia F (502)	■	■							■	
Light Rose F (223)	■	■							■	
Light Siam F (227)	■	■							■	
Light Topaz F (226)	■	■							■	
Peridot F (214)	■	■							■	
Sapphire F (206)	■	■							■	
Silk F (391)	■	■							■	
Smoked Topaz F (220)	■	■							■	
Sun F (248)	■	■							■	

* All Crystalltex articles are available as Hotfix or No Hotfix version, except version S010 Synthetic Transparent (only Hotfix).